



Whole Workflow  
Walk-Away Automation



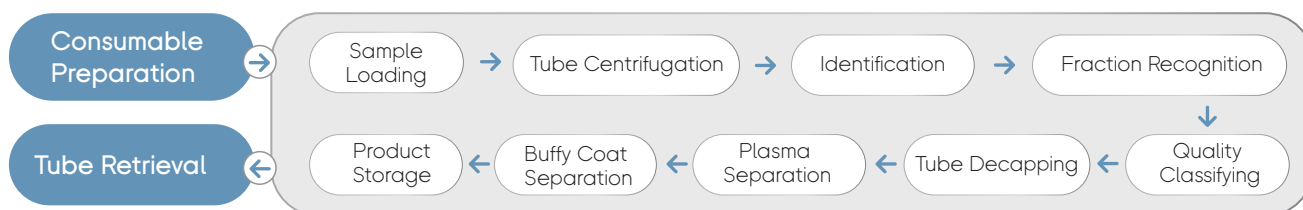
# MGIGLab-S

Automated Blood Fractionation Production Line

## Product Description

MGIGLab-S Automated Blood Fractionation Production Line, integrated Loading/Unloading, Centrifuge, Information Collection, Buffy Coat Separation, Plasma Separation and Product Storage Module as well as Consumable Stack Area, assembling a large number of manual steps and different individual instruments into a closed system, is used for the whole fractionation workflow and walk-away automation from Blood to Plasma & Buffy Coat, making an annual production output of 100,000 blood samples possible.

- ① Loading/Unloading Module
- ② Centrifuge Module
- ③ Information Collection Module
- ④ Buffy Coat Separation Module
- ⑤ Plasma Separation Module
- ⑥ Product Storage Module
- ⑦ Consumable Stack Area



## Product Features

### Safe

Whole blood fractionation workflow in a closed system without cross contamination

### Efficient

1000 samples/8h, walk-away automation



### Stable

Automated sample tracking, less manual errors

### Intelligent

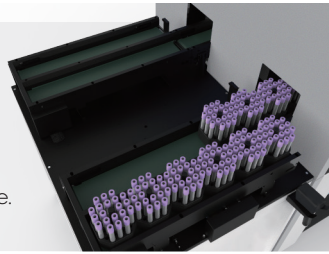
Intelligent and flexible sample scheduling, real-time uploading sample status and pipetting information

## System Design

### System Design

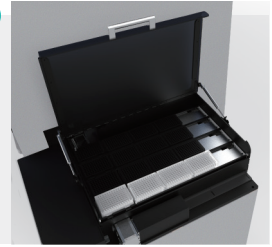
**Sample Throughput:**  
0-240 tubes/time.

**Blood Collection Tube:**  
5 ml EDTA & Genesee tube.



### Product Storage Module

**Product Storage Throughput:**  
4/5 columns, each for 4 SBS  
deep-well plates or frozen tube  
racks with QR code on the  
bottom.



### Information Collection Module

**Sample Tracking:** Tube image capture and barcode identification.

**Sample Quality Check:** Classifying sample quality into different categories -  
Normal/Hemolytic/Lipemic/Empty Tube.

**Blood Fraction Recognition:** Accuracy  $\pm 1\text{mm}$ , plasma volume calculation,  
buffy coat height calculation.

**Tube Decapping:**  $360^\circ$  rotation.



### Buffy Coat Separation Module

**Buffy Coat Separation Throughput:**  
1-2.

**Buffy Coat Storage Labware:**  
Frozen tube with QR code on the bottom.



### Centrifuge Module

**Centrifuge Speed:**  
6200 RPM ( 5800 g RCF ).

**Tube Type Identification:**  
Sample & balancing tube  
identification by cap color.



### Plasma Separation Module

**Plasma Separation Throughput:**  
1-3.

**Plasma Storage Labware:**  
Deep-well plate or frozen tube  
with QR code on the bottom.

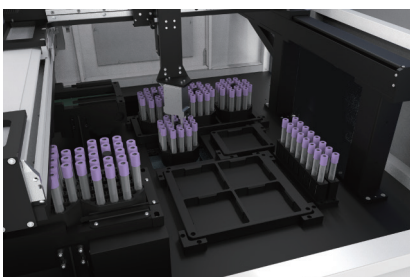


### Consumable Stack Area

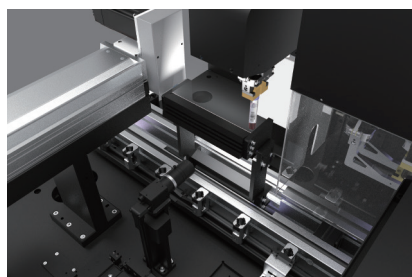
**Consumable Storage Throughput:**  
Tip box, deep-well plate and  
frozen tube rack for 8x96 samples.



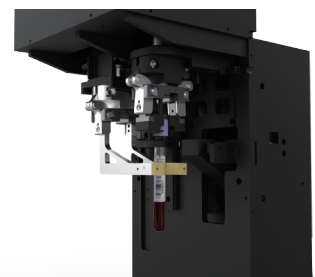
### Sample Gasket Handling



### Tube Image Capture



### $360^\circ$ Rotation Decapping



## User Case

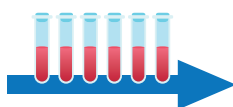
### General semi-automated Plasma Separation Process



5 Technicians 8 hours/day

8 semi-automated workstations

35 m²



### Automated Blood Fractionation Production Line



1 Technician 8 hours/day

1 production line

15 m²

## Specifications

Sample Throughput	1000 samples/8 h
Blood Collection Tube	5 ml EDTA & Genesee Tube
Barcode Scanning	Barcode on blood collection tube, Code 128/Code 39/Codabar. QR code on the bottom of frozen tube.
Centrifuge Unit	Centrifuge Speed: 6200 RPM(5800g RCF). Tube Type Identification: Sample & balancing tube type identification by cap color.
Image Capture Unit	Sample Tracking: Tube image capture and barcode identification. Sample Quality Check: Sample quality classifying into different categories - Normal/Hemolytic/Lipemic/Empty Tube. Blood Fraction Recognition: Accuracy ±1mm, plasma volume calculation, buffy coat height calculation.
Buffy Coat Separation	Buffy Coat Separation Throughput: 1-2. Buffy Coat Storage Labware: Frozen tube with QR code on the bottom.
Plasma Separation	Plasma Separation Throughput: 1-3. Plasma Storage Labware: Deep-well plate or frozen tube with QR code on the bottom.
Pipetting Unit	Pipetting volume: 10-1000 µl
Product Storage	4/5 columns, each for 4 SBS deep-well plates or frozen tube racks with QR code on the bottom.
General Specifications	Dimension: 6000 mm(W) x 1275 mm(D) x 1760 mm(H) Weight: 1500 kg Working Environment: 19 to 25 °C, 20 to 80% RH(Non-condensation), 80 to 106 kPa Power Requirement: 200-240 V, 50/60 Hz, 3300 VA

## CONTACT US

### MGI Tech Co., Ltd

Building 11, Beishan Industrial Zone, Yantian District, Shenzhen

✉ MGI-service@genomics.cn 🌐 www.mgitech.cn ☎ 4000-966-988

#### Copyright Disclaimer

The copyright of this brochure is solely owned by MGI Tech Co., Ltd.. The information included in this brochure or part of, including but not limited to interior design, cover design and icons, is strictly forbidden to be reproduced or transmitted in any form, by any means (e.g. electronic, photocopying, recording, translating or otherwise) without the prior written permission by MGI Tech Co., Ltd.. All the trademarks or icons in the brochure are the intellectual property of MGI Tech Co., Ltd. and their respective producers.



Version: October 2021 | MGPC5002202

Information in this brochure is updated to [17/10/2021] and only for your reference. In no event shall the brochure be regarded as warranty or commitment made by MGI Tech Co., Ltd. All rights and obligations shall subject to final executed agreement.